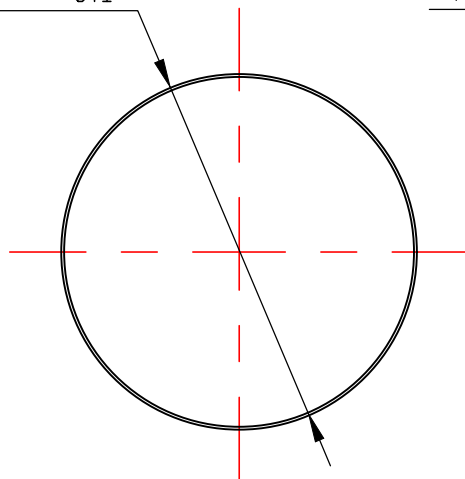
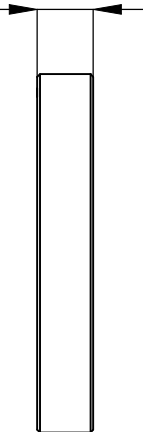


$\varnothing 25.4_{-0.1}^0$



4 ± 0.1

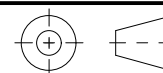


NOTES/SPECIFICATIONS:

1. MATERIALS: BK7
2. APERTURE: 85%
3. SURFACE QUALITY : 10/5 S/D
4. PARALLELISM: <10 ARC SECONDS
5. CHAMFER: 0.2mm x 45 DEGREE
6. FLATNESS: $\lambda/4$ @ 633nm
7. COATING: AR/AR@700nm~1100nm(REFER TO COATING CURVES)
8. DIMENSION IN mm

FOR INFORMATION ONLY
NOT FOR MANUFACTURING PURPOSES

DRAWING
PROJECTION



	NAME	DATE
DRAWN	LLL	18/June/20
APPROVAL	JT	18/June/20

COPYRIGHT © 2020 BY SHALOM EO

SHALOM EO

www.shalomeo.com

BK7 D25.4x4mm WINDOWS WITH
AR@700nm~1100nm COATING

MATERIAL	BK7	REV	A
ITEM #	131-019	PROPORTION	1:1